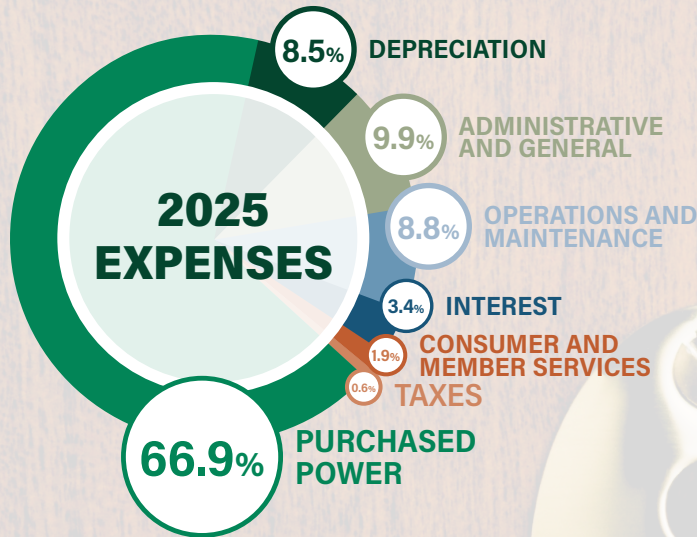
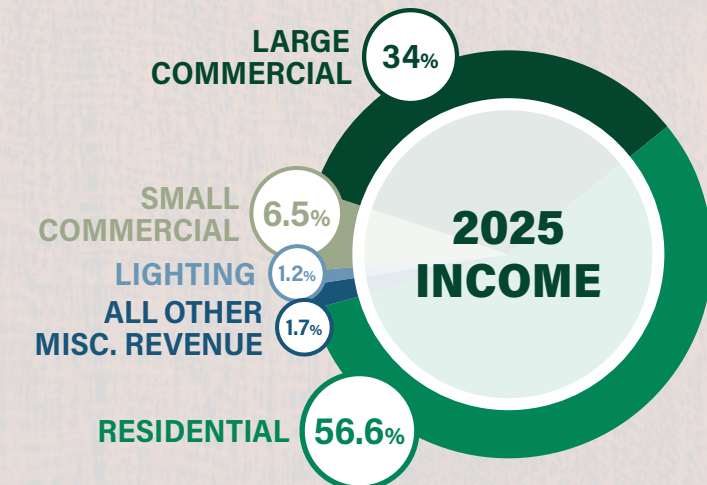


# 2025 ANNUAL REPORT



## TOTAL KILOWATT-HOURS SOLD



**FAST  
FACTS**

**1,529**  
MILES OF  
ENERGIZED  
**LINE**

**1,001 MILES**  
OF OVERHEAD LINE  
**528 MILES**  
OF UNDERGROUND LINE

**60**  
EMPLOYEES

**25,019**  
UTILITY  
POLES



## Condensed Statement of Operations

	2025	2024
<b>Operating Revenues</b>	<b>\$79,208,269</b>	<b>\$73,491,928</b>
<b>Operating Expenses</b>		
Purchased Power	47,270,172	42,044,567
Operations and Maintenance	6,201,356	5,886,369
Administrative and General	6,961,424	6,151,425
Consumer and Member Services	1,350,207	1,300,107
Interest on Long-Term Debt	2,500,207	2,579,860
Taxes	394,913	329,365
Depreciation	5,997,558	5,468,037
<b>Total Operating Expenses</b>	<b>70,675,837</b>	<b>63,759,730</b>
<b>Operating Margins</b>	<b>8,532,432</b>	<b>9,732,198</b>
<b>Non-Operating Margins</b>		
Generation and Transmission Patronage	2,578,622	2,311,040
Other Miscellaneous Revenue (Expense)	243,963	168,456
Interest Income	302,474	574,516
<b>Total Non-Operating Margins</b>	<b>3,125,059</b>	<b>3,054,012</b>
<b>Net Margins</b>	<b>\$11,657,491</b>	<b>\$12,786,210</b>

## Condensed Balance Sheet

	2025	2024
<b>Assets</b>		
Electric Plant (at Cost)	187,365,413	163,141,599
Accumulated Depreciation	(41,892,946)	(37,450,648)
Net Plant	145,472,467	125,690,951
Total Current Assets	21,968,677	21,321,980
Total Current Investments	25,148,197	28,212,123
Leased Property	1,289,747	1,027,947
Deferred Charges	60,264	5,273
<b>Total Assets</b>	<b>\$193,939,352</b>	<b>\$176,258,272</b>
<b>Equities and Liabilities</b>		
Patronage Capital	88,010,847	75,018,770
Margins	11,657,491	12,786,210
Total Equities	99,668,338	87,804,980
Long-Term Debt	66,479,669	69,271,551
Accumulated Post Retirement Benefit	6,853,497	6,761,367
Total Current Liabilities	19,053,930	11,647,858
Deferred Credits	1,883,918	772,516
<b>Total Equities and Liabilities</b>	<b>\$193,939,352</b>	<b>\$176,258,272</b>

**FAST  
FACTS**

**1,529**  
MILES OF  
ENERGIZED  
**LINE**

**1,001 MILES**  
OF OVERHEAD LINE  
**528 MILES**  
OF UNDERGROUND LINE

**60**  
EMPLOYEES

**25,019**  
UTILITY  
POLES

